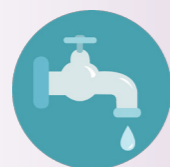


Public Health Snapshot

1 July 2017 - 30 June 2018



20 Drinking water investigations



40 Water supplies surveyed



15 Environmental hazard submissions



7 Mosquito interceptions



16 Ship sanitisation inspections



43 Emergency management interagency meetings attended



24 Disinterments/repatriations assessed



23 Pest eradication applications accessed for human health risk



779 Environmental health investigations



15 Public health emergency responses



16 Commercial solaria visited



10 Border responses



8 Public health emergency exercises



95 Hazardous substance injury notifications



13 Public health issue submissions



539 Well Homes referrals



3749 Well Homes interventions



8 Urban design & transport planning advice



22 Projects used public health analytical support



1752 Requests for health information resources



24 Inclusions in print media



11,020 RPH website Early Childhood Centres webpages accessed

21,656 RPH website new users



30 Community groups supported in community-led action

5 Community led events supported



12 Kōhanga reo supported



158 People with rheumatic fever supported



240 Refugees supported

12 Refugee health needs training facilitated



30 Rare disease notifications



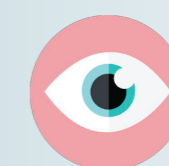
571 Significant disease investigations



29 Presentations of alcohol related health data



7894 Child hearing checks



15,239 Child vision checks



8100* School children immunised



2629 Children assessed at the Porirua Ear Van clinic



2300* Referrals to Public Health Nurses in primary schools



25 Sexual health education sessions for youth



54,168 Orders through the fruit & veg co-op

379 Tonnes of fruit and veg purchased



57 Tobacco retailer education visits



13 Smokefree Aotearoa 2025 projects



1581 Alcohol licence applications



21 Collaborative activities to reduce harm from alcohol and other drugs

* Approximately