



**MINISTRY OF BUSINESS,  
INNOVATION & EMPLOYMENT**  
HIKINA WHAKATUTUKI

---

# The Immigration Process and Mangere Refugee Resettlement Process

---

Shahen Khosrawi  
Kas Brokenshire  
REFUGEE HEALTH LIAISON TEAM MEMBERS

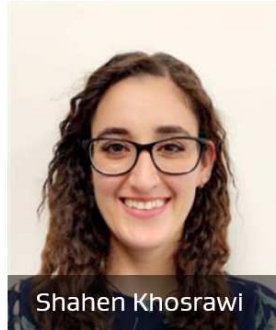


# Refugee Health Liaison Team

## Administrative Team Members



Jasmin Nizamudeen



Shahen Khosrawi

## Clinical Team Members



Karen Chung



Kas Brokenshire



Vince Valdez



# Topics

- The Immigration Process (The Refugee Journey )
- New Quota Refugee Health Model (Offshore Assessments)
- The Impact of COVID-19 on Refugee Resettlement
- Te Āhuru Mōwai o Aotearoa (Mangere Refugee Resettlement Process)
- MBIE Interpreting Services



# Four categories

## Refugee and Protected Person Status

- This can be claimed on arrival at a NZ airport or port, or at a later time after arrival in NZ.
- People who fear returning to their own country can ask NZ to recognise them as refugees or protected persons.
- NZ has signed an international convention that supports the right of people to seek asylum.

## Community Organisation Refugee Sponsorship Category (CORS)

- In June 2017, the Government agreed to pilot a CORS Category as an alternative form of admission for 25 refugees in 2017/18, to complement the Refugee Quota Programme.
- provide an opportunity for community organisations to more actively engage in supporting successful refugee settlement
- enable sponsored refugees, with the support of community organisations, to quickly become independent and self-sufficient
- In May 2020, the Government agreed to extend the CORS category pilot for a further 3 years from 1 July 2021.



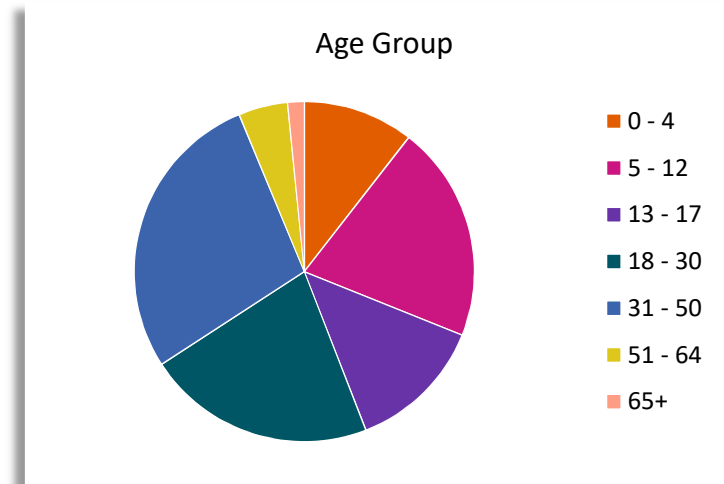
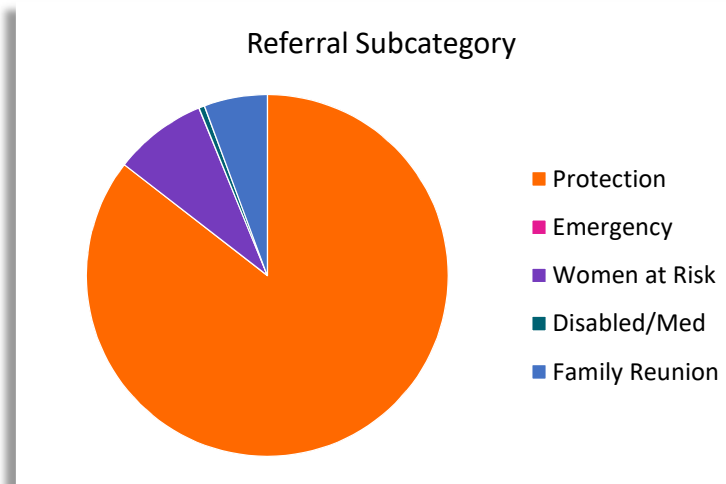
# Four categories

Refugee Quota Programme (RQP)	Refugee Family Support Category
<ul style="list-style-type: none"><li>• Decided by the NZ Government</li><li>• Established 1987</li><li>• Annual refugee quota includes:<ul style="list-style-type: none"><li>Women at risk</li><li>Medical/disabled (incl HIV/AIDS)</li><li>General Protection (including family reunification)</li></ul></li><li>• Selection missions and decision-making process</li></ul>	<ul style="list-style-type: none"><li>• Supports refugees living in New Zealand to settle by allowing them to sponsor family members for residence</li><li>• Up to 300 sponsored people each year</li></ul> <div data-bbox="1120 831 2056 1161" style="border: 1px solid black; padding: 10px;"><p>Both are New Zealand residents on arrival – can access the same health, housing, education, and benefit and employment support as other NZ residents and citizens</p></div>

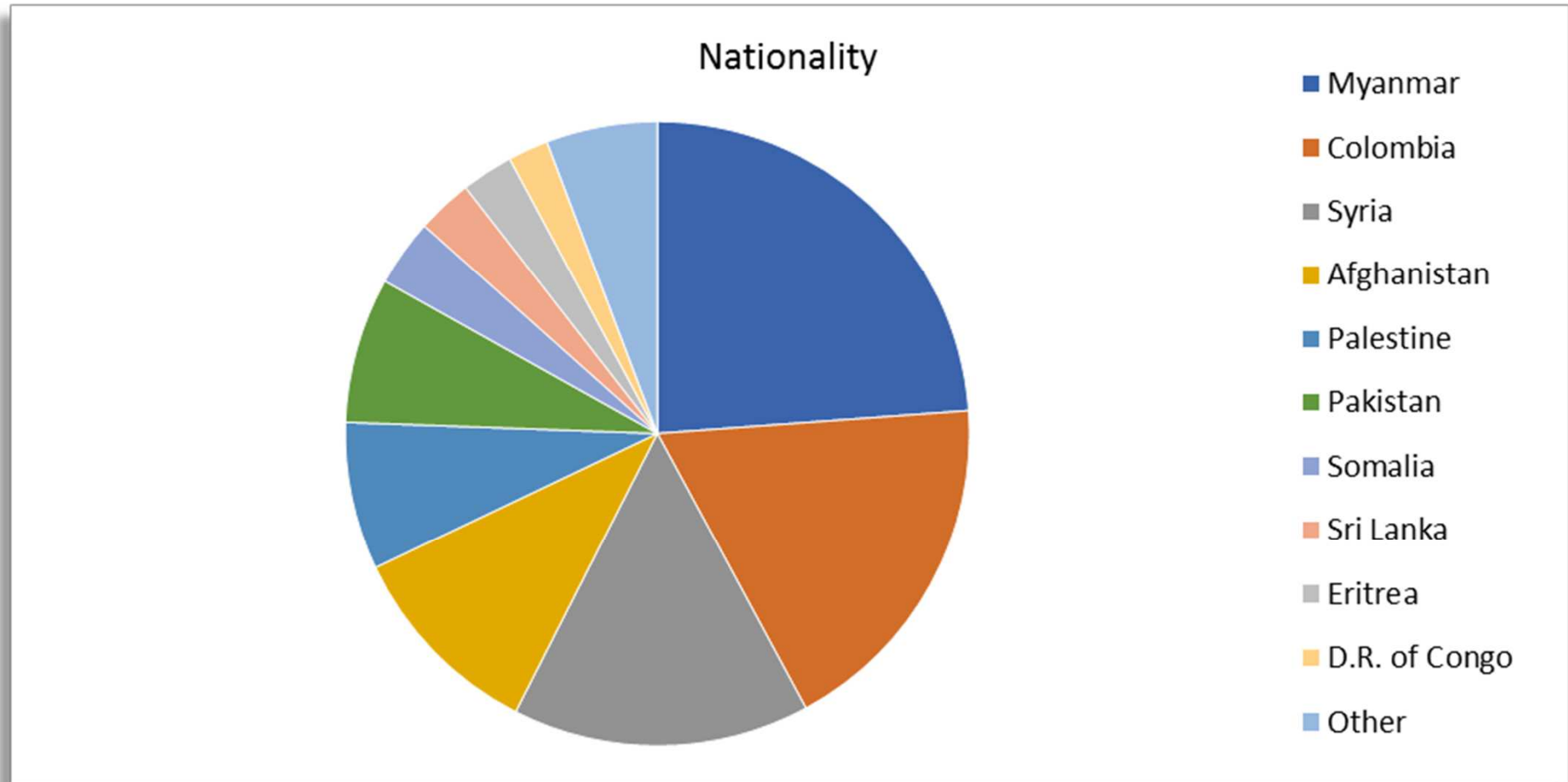


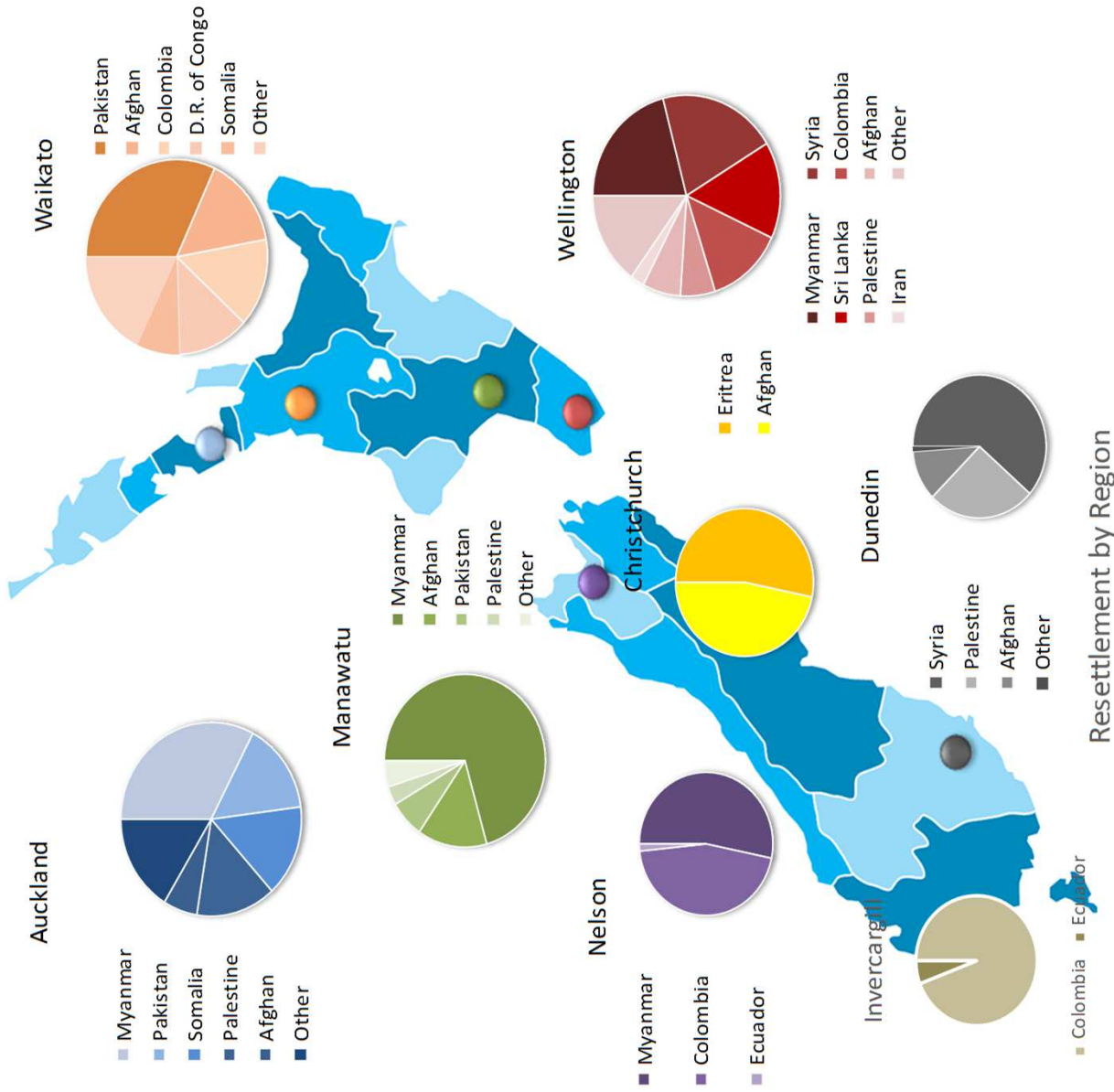
# New Zealand Quota Refugee Resettlement

- Humanitarian programme – 1500 people from July 2020
- UNHCR referred
- Government sets the quota size – reviewed every 3 years
- Government establishes the regional distribution
- New Zealand residents on arrival



# 2018/19 Quota composition





Resettlement by Region





# Selection and arrival process



# Refugee Journey Offshore-Health Requirements

Required medical assessments are:

- a limited medical certificate
- a chest x-ray
- a full blood count, estimated glomerular filtration rate (eGFR), and an HIV test



# Refugee Journey Offshore-Health Requirements

## The conditions that cannot be waived are:

- Current dialysis treatment or likely to need dialysis in the next 5 years;
- Severe haemophilia;
- Conditions requiring full-time care;
- Current active TB;
- Multiple Drug Resistant TB (MDR-TB) or Extensively Drug Resistant TB (XDR-TB).

Anyone identified as having one of five conditions cannot be selected for inclusion in the Refugee Quota Programme unless they are granted an exception on a case-by-case basis by the Minister of Immigration.



# Increasing the Quota

- NZ Quota increased from 1000 to 1500 people on July 2020
- More people going to Mangere Refugee Resettlement Centre (Te Āhuru Mōwai o Aotearoa: “A safe haven in Aotearoa”) for a shorter duration of time
- New Settlement Locations





## Existing places that accept refugees:

- Auckland
- Hamilton
- Palmerston North
- Wellington
- Nelson
- Christchurch
- Dunedin
- Invercargill



## Additional places that will be accepting refugees:

- Levin
- Masterton
- Blenheim
- Ashburton
- Timaru



# New Health Model

- Looks at whole of quota refugee health journey
- Voluntary medical screening
- Vaccinations
- Pre-departure health check before arrival to NZ
- Enhanced primary health care and ancillary services at Mangere.



MINISTRY OF BUSINESS,  
INNOVATION & EMPLOYMENT  
HIKINA WHAKATUTUKI

# Quota Refugee Health Model

## VISION

All quota refugees living in New Zealand will be living, healthy, safe and independent lives.

## KEY MESSAGES

- > Supporting the health of refugees throughout their journey to resettlement in NZ
- > Planning complex health services earlier to ensure the right care is given at the right time
- > Coordinating services offshore through to resettlement communities
- > Orientating refugees early to the NZ health system
- > Providing tools to refugees to navigate the health system to allow them to manage their own health needs better

## OBJECTIVES

- Offer an integrated health service across the continuum to:
- > aid resettlement
  - > plan services in a timely manner
  - > reduce the personal burden of disease
  - > improve health outcomes and equity for all quota refugees

## PRINCIPLES

- Focus on prevention and early intervention, including for mental health needs, to reduce the personal and social burden of disease:
- > provide people-centred services
  - > are sustainable in the long term, with consistent services across the country
  - > focus on achieving effective self-management
  - > are informed by evidence, test and evaluate promising interventions to improve our knowledge for refugee health

## OUTCOMES

- > Living healthy lifestyles
- > Increased health literacy
- > Self managing

If you have any queries please contact  
RHLT@mbie.govt.nz




# Settlement Exams

- Settlement Health Assessment 948
  - Offered once visa approved and does not affect visa status.
  - Full History/ Full Physical Examination/ Pregnancy / Laboratory and vaccinations. Enables planning of Health services in NZ.
- Pre-departure Health check 949
  - Offered once intake is selected - 21 days prior to departure
  - Health information update/ TB Screening/ Travel and post-arrival requirements/ Personal requirements/ and Settlement Medications.
- Settlement Additional Information 956
  - Blank form that allows us to request further information. This form can be prescribed at anytime however mostly it is prescribed with the 949.



# Offshore Health Reports

 **MINISTRY OF BUSINESS,  
INNOVATION & EMPLOYMENT**  
HIKINA WHAKATUTUKI

---

## Offshore Health Report

Given/First Name:
Family/Last Name:
Date of Birth:
Gender:
NHI:
Language/s spoken:
Preferred language:
Translator required:
Country of Birth:
Country of Departure:
Eligibility for Healthcare in New Zealand: NZ Permanent Resident

**Ongoing concerns/Issues:**

1. Former Refugee
- 2.

**Medical/Surgical History;**  
[1. Issues](#)  
Information

**Women's Health History;**  
[1. Issues](#)  
Information  
(Obstetric history, gynaecological history, family planning)

**Men's Health History;**  
[1. Issues](#)  
Information

**Children's Health History;**  
[Birth History](#)  
Information

[Developmental Milestones](#)  
Information

[Diet](#)  
Information


**Family history;**  
Always complete. If nil documented write Nil known family history

- Every refugee will have an offshore health report summarising the available pertinent offshore health information





# Offshore Health Reports

 **MINISTRY OF BUSINESS,  
INNOVATION & EMPLOYMENT**  
HIKINA WHAKATUTUKI

---

**Wellness/Mental Health History:**  
mental health

**Social History:**  
Where fled from  
Family  
Religion  
Drinking, smoking  
Driving  
Education  
Work history  
Friends or family in New Zealand

**Current Medications:** Always complete. If nil documented write Nil known medications

**Allergies:** Always complete. If nil documented write No known drug allergies

**Vaccinations;**  
History:

Still required:


**Offshore Assessment Findings;**  
Measurements (date):

Height:	Weight:	BMI or Head Circumference:
Blood Pressure:	Heart Rate:	Respiratory Rate:

Vision: 6/ (right eye), 6/ (left eye)

Investigations (date):  
Hepatitis B, hepatitis C and syphilis serology: negative  
Full blood count: within normal limits  
Stool microscopy: no ova or cysts.  
Chest X-ray: no significant abnormalities.

Investigations (date):  
Full blood count and eGFR: within normal parameters.  
HIV test: non-reactive

 **MINISTRY OF BUSINESS,  
INNOVATION & EMPLOYMENT**  
HIKINA WHAKATUTUKI

---

**Recommendations;**

1. Medical Condition  
Advice specific to condition  
Referrals as indicated

2. Vaccinations  
Requires \_\_\_\_\_ in order to be up to date with the New Zealand Immunisation Schedule

3. Stool screening  
Arrange a further 2 stool specimens for culture and microscopy.

4. Sexual Health screening  
Offer sexual health check (aged 15 plus)

5. Family Planning  
Discuss family planning

6. Cervical Screening  
Discuss national cervical screening programme and offer cervical screening. (aged 25 – 70)

7. Breast Screening  
Discuss national breast screening programme and offer breast screening. (aged 45-69)

8. Bowel Screening  
Discuss national bowel screening programme and offer bowel screening. (aged 60-74)

9. Dental follow up  
Consider Emergency dental assessment at Mangere Refugee Resettlement Centre  
Discuss enrolling people aged <18 with local dental services for young people  
Discuss dental services in New Zealand.

10. Before school check  
Refer to local before school check for vision and hearing screening (for children aged around 4)

Author:  
Qualifications;  
Role: Refugee Health Nurse Specialist or Refugee Health Medical Officer



# Data Export to PMS (Patient Management System)



## Final step

- Export data to PMS with the NHI number
- Preview of all exams in the PMS patient inbox

