



WELL HOMES

Wellington Housing Coordination Service

wellhomes@huttvalleydhb.org.nz

0800 675 675

Bi-monthly Newsletter

**OCTOBER/
NOVEMBER 2017**

Well Homes is a housing coordination service for the greater Wellington region that supports whānau to live in a **warm, dry and safe** home.

We wish you and your whānau a wonderful

Christmas
and a prosperous
New Year

FAKAUE LAHI

FIJIAN

VINAKA
VAKA
LEVU

SAMOAN

Fa'afetai

NIUE

MĀORI

tēnā
rawa
atu koe

FAKAFETAI

TONGAN

mālō

MEITAKI

TOKELAU

COOK ISLAND MĀORI

THANK YOU


Without you, our housing programme wouldn't reach the people who need it most

INTERVENTION NUMBERS

73

 Visits completed

298

 Total number of family members
(146 of those being children)

Interventions given to whānau	No. of referrals
Beds and Bedding	88
Curtains	63
Floor Coverings	3
Health referrals	4
Heating Sources	49
Insulation	15
Key messages on creating a warmer, drier and healthier home	50
Minor Repairs	89
Mould Kits	52
Other	123
Social Housing Relocation	12
Social referral	8
Ventilation	11
Total	567

MEET THE GOVERNANCE GROUP

The role of the combined Governance Group is to provide strategic direction and leadership to ensure effective implementation of the Well Homes Programme and Rheumatic Fever Prevention Plan across the Hutt Valley and Capital and Coast District Health Board areas. The Governance Group oversees the implementation of Well Homes and Rheumatic Fever (RF) programmes. Members of the Governance Group at times lead small working groups in order to progress key project activities.

Key focus areas

- Engaging with communities to target whānau in the four eligible categories for housing assessments and interventions that will improve health outcomes.
- Reducing the transmission of Group A Streptococcus (GAS) throat infections and treating GAS throat infections quickly and effectively.
- Increasing awareness of sore throats, rheumatic fever and other housing related health conditions.

Membership

Name	Project Role / representation
Anne Allan-Moetaua	Central Pacific Collective
Barbara Vardey	Clinical Services Manager, Compass Health
Cheryl Davies	General Manager, Tū Kotahi Māori Asthma Trust
Dr Craig Thornley	Medical Officer of Health, Regional Public Health
Dr Nevil Piere	Programme Deputy Director He Kainga Oranga
Dr Nikki Blair	Paediatric Consultant Child Health, CCDHB
Hata Wilson	Manager, Whānau ora, Te Runanga o te Atiawa
Helene Carbonatto (Chair)	General Manager, Strategy Planning & Outcome, HVDHB (Chair)
Liz Kelly	Chief Executive, Porirua Whānau Centre
Phil Squire	Chief Executive, Sustainability Trust
Simon Philips	Chief Executive, Maraeroa Marae Health Clinic, Porirua
Sipaia Kupa	Pacific Peoples Pacific Health Directorate, CCDHB
Tara D'Sousa	Group Manager, Healthy Environments and Disease Control, Regional Public Health
Lynda Ryan	Practice Development Facilitator, Te Awakairangi Health Network
Te Iringa Davies	Kaiwhakahaere/Manager, Ora Toa PHO
Teresea Olsen	Health and Social Services Manager, Kokiri Marae
Tofa Suafole-Gush	Director Pacific Peoples Health, HVDHB and WDHB

Healthy Housing Guarantee Bill

After many years of providing healthy housing support services and advocacy for better housing quality, the Well Homes partners (Regional Public Health, Tu Kotahi Māori Asthma Trust, Sustainability Trust and Otago University) are celebrating the news of the Healthy Homes Guarantee Bill being passed into law recently. This is momentous for New Zealand and very exciting for Well Homes - the Bill provides strong national policy direction and government leadership for improving the quality of our housing. We're supportive of the proposed mandatory healthy housing standards to ensure warm, dry accommodation, particularly for those who are living in cold, damp rentals.

Details of the proposed healthy housing standards will be drafted over the coming months but we are confident that the standards will be addressing whole house solutions, and will build on the insulation and smoke alarms required under current legislation. The standards will include requirements for the provision of heating, ventilation and draught stopping. Moisture access into the home and drainage will be considered in the standards.

Thanks Flick

Regional Public Health's Senior Public Health Advisor, Kiri Waldegrave, recently appeared in a new campaign video for Flick Electric Co. in support of their new initiative. Flick are providing 10,000 energy saving light bulbs to Kiwi households in need, and Well Homes will be distributing some of the free light bulbs to whānau in 2018. View the short clip on our Well Homes [Facebook page](#).



Meet our supporter

Supporting the Well Homes/Department of Corrections partnership, Central Linen Services have agreed to donate good quality sheets and pillow cases they are unable to use. In the last 12 months over 200 single bedding sets have been given to Well Homes whānau, and the linen donated by Central Linen Services will be included and/or repurposed into cot sets, to complement these sets in the future.



Well Homes funding

Exciting news- Safekids Aotearoa and Accident Compensation Corporation (ACC) have accepted the Well Homes application for funding towards Tamariki Safety Boxes!

Our homes are where injuries most commonly happen- with children under age five being particularly at risk. In 2018, Well Homes assessors will provide 100 Safety Boxes to whānau with children aged 0-4 years to minimize the risk of avoidable injuries around the home. Each box will contain child friendly housing items such as safety gates, power point covers, cupboard latches, door stops and glass stickers. We are also providing each family with boxes to store medications safely away from young children, and to store small toys to reduce the chances of tripping over them.

Event promotion

TE RA O TE RAUKURA
Featuring **WELLINGTON REGIONAL KAPA HAKA**

SATURDAY 3 FEBRUARY 2018
Te Whiti Park
Waiwhetu
Lower Hutt



Well Homes will be at Te Ra in the Warrant of Fitness tent in February and we'd love to see you there!

HVDHB Quality Awards



Well Homes was recognised in the recent *Hutt Valley DHB Quality Awards 2017- Striving for Excellence* with two nominations.

The first nomination was for *Excellence in Community Health and Wellbeing* for the partnership Well Homes has developed with the Department of Corrections as an intervention supplier of bedding. The second nomination was for *Excellence in Process and Systems Improvement category* in recognition of the work done to create an automated referral system so every whānau with a child in hospital with asthma/respiratory conditions is offered a Well Homes visit. Good work team!

Welcome Anna!



Welcome Anna Robertson-Bate, our new Public Health Advisor (Urban Design, Transport and Housing at Regional Public Health)

Anna came from Caritas Aotearoa New Zealand where she was a programme coordinator.

In this role Anna worked with Ministry of Foreign Affairs and Trade (MFAT) and community organisations (including tangata whenua) in New Zealand and Government agencies and NGOs in Timor-Leste and in Kiribati. Anna brings with her energy and enthusiasm for public health and a great understanding of the social determinants of health.

Just a reminder around the Well Homes eligibility criteria:

WHĀNAU ELIGIBLE FOR WELL HOMES SERVICES

Rheumatic Fever/Household Crowding Focus (Eligible)	Expanded HHI Service (Eligible)
<ul style="list-style-type: none"> A child (0-14) hospitalised overnight with an indicator condition (Hospital) <p>OR</p> <ul style="list-style-type: none"> A person in the house is eligible to receive monthly penicillin injections as a result of a past episode of Rheumatic Fever (Prophylactic Penicillin Services) <p>OR</p> <ul style="list-style-type: none"> Referral from Sore throat management services <p>AND</p> <ul style="list-style-type: none"> At least one other child/young person (0-19 years) living in the household. Evidence of structural or functional crowding 	<ul style="list-style-type: none"> 0 – 5 hospitalised: for an indicator condition (crowding removed) Priority population of 0 – 5s (families with children aged 0 – 5 for whom at least two of the following risk factors apply: CYP finding of abuse or neglect; caregiver with corrections history; mother has no formal qualifications; and long term benefit receipt) At risk pregnant women/new mothers.

AND

Low income; one member of the household is a New Zealand citizen or permanent resident; and the family lives in the DHB catchment area.

Well Homes work closely with external housing service providers so where a referral does not fit this criteria they will be forwarded to the appropriate service on the referrer's behalf.

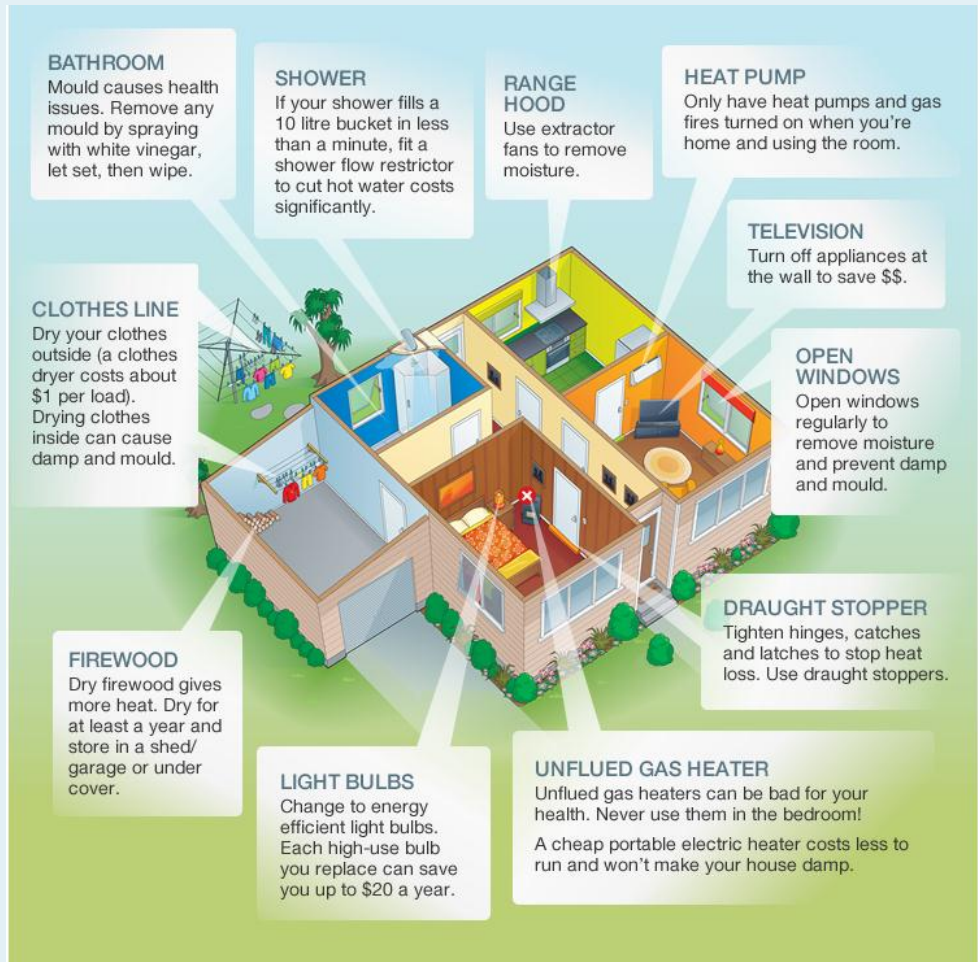
ASSESSOR'S TOP TIP FOR THE MONTH!



Tui Tepania, Well Homes assessor, Tu Kotahi Māori Asthma Trust

If you have a regular automatic payment set up for your power account it's a good idea to keep paying the winter rate during the warmer months, so that by the time winter arrives you'll be in credit when your heating costs increase.

You can find other energy saving ideas on the [energywise website](#).



Useful information about Well Homes

Timeframes that Well Homes works to:

1 – 2 WEEKS	4 – 6 WEEKS	3 – 9 MONTHS
REFER	VISIT	FEEDBACK
Referral received: <ul style="list-style-type: none"> • Receipt of referral sent. Whānau phoned: <ul style="list-style-type: none"> • Agree to visit (yes/no). • If no, referrer is advised by letter. 	Assessment booked: <ul style="list-style-type: none"> • Visit completed by assessor. • Referrers are contacted by letter if we are not able to make a time with whānau. 	<ul style="list-style-type: none"> • When all housing interventions are finished a report is sent to the referrer, medical centre, whānau and put into medical records. • Interim feedback is available at any time. Phone 0800 675 675, or email wellhomes@huttvalleydhb.org.nz

The referral form/information about our service is available online: <http://www.rph.org.nz/housing>

Well Homes | Wellington Housing Coordination Service

P 0800 675 675 | E wellhomes@huttvalleydhb.org.nz | Well Homes Wellington